

NESTAFLEX®



NestaFlex

Gravity 226 Skate Wheel Conveyor

* Specifications of models available may vary from the model shown.

FEATURES

WIDTH: 14", 18" or 24"

Determined by package size, available conveying area and application specific needs

LENGTH EXTENDED: 8' - 60'

Determine total length needed, including curvatures and obstructions

AXLE CENTER: 5.25", 4" or 3"

Package size determines necessary axle center length on fully extended conveyor

SKATE WHEEL TYPE: STEEL, BLACK, RED

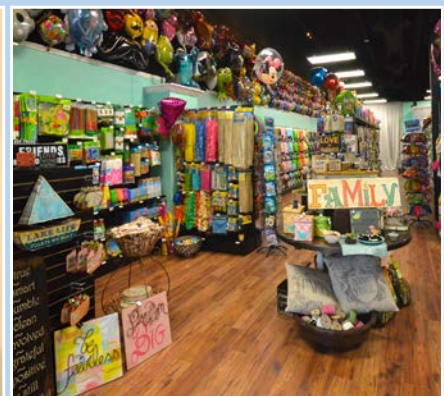
Determined by package weight, durability, operational flow control, and application specific needs

DESCRIPTION

Designed to expand, contract and move easily, the NestaFlex® 226 is a self tracking, gravity skate wheel conveyor that has a per linear foot capacity of 226 pounds. This unit is engineered to handle multi-sized cartons in low to medium volume applications.

The all-steel construction provides unmatched structural integrity, whether the conveyor is extended, compacted or configured in simple or compound curves. Adjustable inner legs vary height to achieve gravity flow.

The NestaFlex® 226 is the choice for use in retail store level applications, packaging areas, assembly lines and in low volume shipping and receiving departments.





14" Wide Models		18" Wide Models		24" Wide Models		Length Adjustments	
Model #	Leg Sets	Model #	Leg Sets	Model #	Leg Sets	Extended	Contracted
22614008	3	22618008	3	22624008	3	8' 11"	2' 4"
22614012	4	22618012	4	22624012	4	12' 10"	3' 3"
22614016	5	22618016	5	22624016	5	16' 9"	4' 3"
22614020	6	22618020	6	22624020	6	20' 9"	5' 2"
22614024	7	22618024	7	22624024	7	24' 8"	6' 2"
22614028	8	22618028	8	22624028	8	28' 7"	7' 1"
22614032	9	22618032	9	22624032	9	32' 6"	8' 1"
22614036	10	22618036	10	22624036	10	36' 6"	9' 0"
22614040	11	22618040	11	22624040	11	40' 5"	10' 0"
		22618044	12	22624044	12	44' 4"	10' 11"
		22618048	13	22624048	13	48' 3"	11' 11"
		22618052	14	22624052	14	52' 3"	12' 10"
		22618056	15	22624056	15	56' 2"	13' 10"
		22618060	16	22624060	16	60' 1"	14' 9"

6 skate wheels per axle

8 skate wheels per axle

8 skate wheels per axle

With standard 5.25" axle center

All conveyor products can be modified to suit specific design requirements. Please contact our sales representatives for details on sizes or options that are not listed.

STANDARD FEATURES

- Load capacity 226 lbs/ft
- Black poly skate wheels with steel ball bearings
- 5.25" axle centers
- 28" – 44" adjustable conveyor heights using hand knobs to raise or lower the legs
- Heavy duty steel square tubing zinc plated legs
- Welded horizontal leg brace
- Heavy duty 5" x 1 1/2" casters with 2 total lock brake casters on each end
- 11 gauge steel side links assembled using steel pin and retaining ring
- 5/16" diameter axle across the width
- Self-tracking design
- Couplers
- Heavy duty retractable package stop

OPTIONS

- 4" and 3" axle centers
- Additional brake casters
- Additional set of couplers
- Elevations for Adjustable legs
 - 20"-28"
 - 25"-38"
 - 36"-52"
- Steel skate wheels with steel ball bearings and Red poly skate wheels with nylon bushings

ACCESSORIES

- Curve Guards
- Swing Stick
- T-Junction

Technical Data

CONSTRUCTION

All steel construction

LEGS

Zinc plated, heavy duty leg supports
1 1/8", square steel tubing with a welded cross member

SIDE LINKS

Made of 11 gauge steel

WARRANTY

18 month factory warranty

SERVICES AVAILABLE

- Technical Support
- Application Support
- Hardware Support